

JOINT VENTURES OF GRIP STRAPING TECHNOLOGIES LTD



MZ Construction Consumable Supply LTD

23A Botwell Lane, Hayes,
Middlesex, United Kingdom,
UB3 2AB

Contact Number: +447424438725

Contact Email: MZ@mzccs.co.uk ,MZccs@yahoo.com

Web site: www.mzccs.co.uk

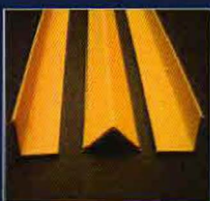
Company Registration No: 10347411

VAT Registration No: 250 7305 31

EORI Registration No: GB250730531000



Have firm grip on your Product Packing



Grip Strapping Technologies Private Limited

(A Group Company of Cyklop Asia PTE Ltd)



South Asia
ISO 9001:2008

Survey # 382 & 384, Nuthankal, Medchal - 501401, India

email : mz@mzccs.co.uk



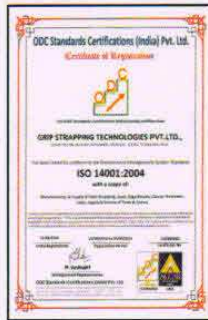
Cyklop is a leading supplier of Universal Solutions for load security. In 1912 Emil Hoffmann established the Cyklop in Cologne. Numerous product innovations and patented inventions formed the basis of rapid growth and systematic expansion strategy of the young company.

Cyklop believes in the philosophy "Think Global. Act Local"

First step towards this philosophy, Cyklop acquired a steel strapping manufacturing facility of M/s. Grip Strapping Technologies Private Ltd. Hyderabad. India (An ISO 9001 & ISO 14001 Certified Company) to manufacture and supply of High Tensile Steel Strapping and Seals of International Standards M/s. Grip Strapping Technologies Private Ltd. has an established Sales & Service Support across the country

At present Grip Strapping Technologies Private Ltd. is exporting more than 30% of Steel Strapping Production to various countries like Australia, Germany, Brazil, Singapore, UAE, Spain, Sri Lanka and USSR

Grip Strapping Technologies Pvt. Ltd. is providing Sales & Service to all major segments like Steel Producers, Cold rollers, Galvanizer, Glass, Copper, Aluminium. TMT producers, Tower & Structural and jute segment etc.



The strapping manufactured at our plant has the following unique benefits.



- Consistent Tensile Strength enabling secure packaging
- Smooth rounded edges for safe handling
- Uniform width and thickness
- Painted surface for rust resistance
- Wax coating for maximum tension transmission
- Free from curl, camber and twists.

We are manufacturing and supplying the following packing products

- UNIFLEX steel Strapping (For Light Duty application)
- SUPERFLEX Steel Strapping (For Heavy Duty application)
- Seals for Steel and PET Strapping
- Manual/Pneumatic Strapping Tools, Spares & Dispensers for Steel & PET Strapping
- Edge Boards / Corner Boards / ID / OD Protection for all Corner Protections
- Cyklop Polyester (PET) Strapping and PP Straps
- Stretch Film & BOPP Tapes for all application

Our Products are tested and used in various types of industries and results in cost saving to the end users.

SPECIFICATION CHART LOW CARBON UNIFLEX STEEL STRAPPING

| Size | Width mm | Thick mm | Break Load | UTS Kg/mm2 | Bend | Elongation (150mmGL) | Winding | Yield (M/Kg) |
|------|----------|----------|------------|------------|------|----------------------|---------|--------------|
| 1215 | 12.70 | 0.38 | 377 | 78.0 | 2 | 1.5% max | Mill | 26.4 |
| 1218 | 12.70 | 0.46 | 450 | 77.0 | 2 | 1.5% max | Mill | 21.8 |
| 1223 | 12.70 | 0.58 | 552 | 75.0 | 2 | 1.5% max | Mill | 17.3 |
| 5815 | 15.88 | 0.38 | 470 | 78.0 | 2 | 1.5% max | Mill | 21.1 |
| 5818 | 15.88 | 0.46 | 562 | 77.0 | 2 | 1.5% max | Mill | 17.4 |
| 5820 | 15.88 | 0.51 | 623 | 77.0 | 2 | 1.5% max | Mill | 15.7 |
| 5823 | 15.88 | 0.58 | 690 | 75.0 | 2 | 1.5% max | Mill | 13.8 |
| 3415 | 19.05 | 0.38 | 564 | 78.0 | 2 | 1.5% max | Mill | 17.6 |
| 3418 | 19.05 | 0.46 | 674 | 77.0 | 2 | 1.5% max | Mill | 14.5 |
| 3420 | 19.05 | 0.51 | 728 | 75.0 | 2 | 1.5% max | Mill | 13.2 |
| 3423 | 19.05 | 0.58 | 830 | 75.0 | 2 | 1.5% max | Mill | 11.5 |
| 3425 | 19.05 | 0.64 | 915 | 75.0 | 2 | 1.5% max | Mill | 10.3 |
| 1425 | 31.75 | 0.64 | 1485 | 73.0 | 2 | 1.5% max | Ribbon | 6.2 |
| 1431 | 31.75 | 0.79 | 1830 | 73.0 | 2 | 1.5% max | Ribbon | 5.1 |



Tolerance

Width : +/-0.127 mm
 Thick : +0.05mm, -0.025mm
 Paint Thick : 5.0 Microns
 Wax : Water Soluble
 Coil ID / OD : 406/680 mm
 Coil Weight : 45-50 Kgs Approx.

SPECIFICATION CHART MEDIUM CARBON SUPERFLEX STEEL STRAPPING

| Size | Width mm | Thick mm | Break Load | UTS Kg/mm ² | Bend | Elongation (150mmGL) | Winding | Yield (M/Kg) |
|------|----------|----------|------------|------------------------|------|----------------------|---------|--------------|
| 5820 | 15.88 | 0.51 | 746 | 92.0 | 2 | 5% min | Mill | 15.9 |
| 5823 | 15.88 | 0.58 | 848 | 92.0 | 2 | 5% min | Mill | 13.8 |
| 3420 | 19.05 | 0.51 | 894 | 92.0 | 2 | 5% min | Mill | 13.2 |
| 3423 | 19.05 | 0.58 | 1017 | 92.0 | 2 | 5% min | Mill | 11.5 |
| 3425 | 19.05 | 0.64 | 1122 | 92.0 | 2 | 5% min | Mill | 10.6 |
| 3431 | 19.05 | 0.79 | 1385 | 92.0 | 2 | 6.5% min | Mill | 8.5 |
| 3433 | 19.05 | 0.84 | 1473 | 92.0 | 2 | 6.5% min | Mill | 7.9 |
| 3435 | 19.05 | 0.89 | 1560 | 92.0 | 2 | 6.5% min | Mill | 7.5 |
| 1420 | 31.75 | 0.51 | 1490 | 92.0 | 2 | 5% min | Ribbon | 7.8 |
| 1425 | 31.75 | 0.64 | 1870 | 92.0 | 2 | 5% min | Ribbon | 6.4 |
| 1431 | 31.75 | 0.79 | 2308 | 92.0 | 2 | 6.5% min | Ribbon | 5.1 |
| 1435 | 31.75 | 0.89 | 2600 | 92.0 | 2 | 6.5% min | Ribbon | 4.6 |
| 1440 | 31.75 | 1.04 | 3038 | 92.0 | 2 | 9.0% min | Ribbon | 3.9 |
| 1450 | 31.75 | 1.27 | 3710 | 92.0 | 2 | 9.0% min | Ribbon | 3.2 |

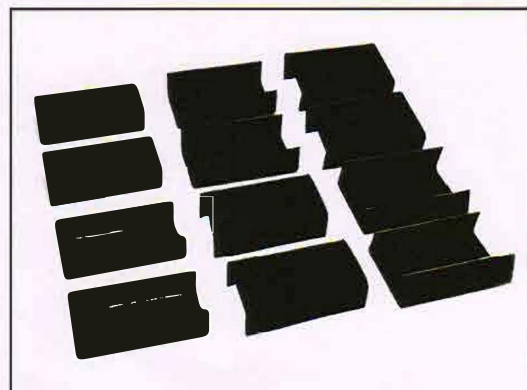
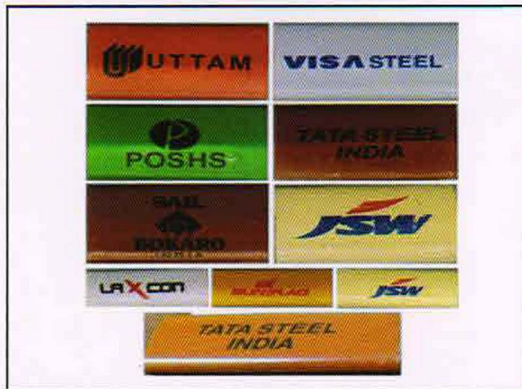


Tolerance

| | |
|-------------------|-----------------------|
| Width | : +/-0.127 mm |
| Thick | : +0.05mm, -0.025mm |
| Paint Thick | : 5.0 Microns |
| Wax | : Water Soluble |
| Coil ID / OD | : 406/680 mm |
| Coil Weight | : 45-50 Kgs Approx. |
| Jumbo Coil Weight | : 225-450 Kgs Approx. |

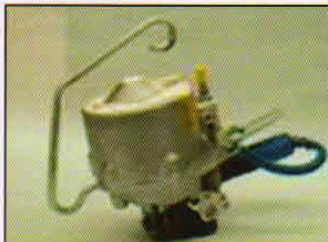
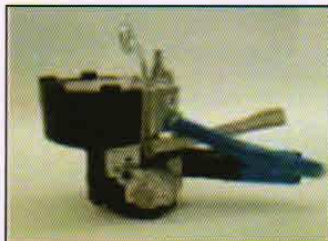
TYPE OF SEALS AND SPECIFICATIONS

| SEAL NAME | STRAP SIZE | | SEAL TYPE | JOINT TYPE |
|-----------|------------|-------|--------------|----------------------|
| | Inch | mm | | |
| 12 AMP | 1/2 | 12.70 | Nestack | Double Notch |
| 12 C | | | Snap on | Double Notch |
| 12 SPC | | | Push | Single Reverse Notch |
| 58AMP | 5/8 | 15.88 | Nestack | Double Notch |
| 58 C | | | Snap on | Double Notch |
| 58 SPC | | | Push | Single Reverse Notch |
| 34 C | 3/4 | 19.05 | Snap on | Double Notch |
| 34 PNCS | | | Push | Single Notch |
| 34 AMP | | | Nestack | Double Notch |
| 34 HOC | | | Push | Double Notch |
| 114 P | 1 1/4 | 31.75 | Push | Double Notch |
| 114 OF | | | Open Flagnge | Double Notch |
| 117 H | | | Open Flange | Double Crimp / Notch |

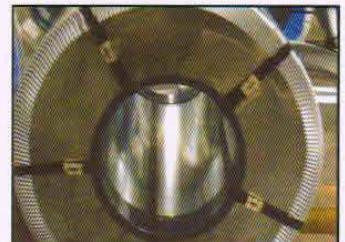


TOOLS AND ACCESSORIES

TOOLS FOR STEEL STRAPPING



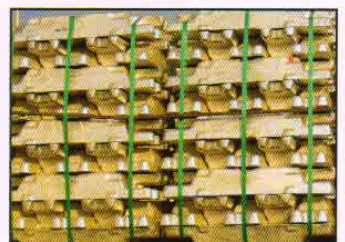
APPLICATION



TOOLS FOR PET STRAPPING



APPLICATION



PET

| Size | WidthxThick in mm | Breaking Strength (N) | Mts/Coil | Kgs/Coil |
|------|-------------------|-----------------------|----------|----------|
| 2227 | 12.50X0.58 | 2700 | 2500 | 21.80 |
| 2230 | 12.50X0.62 | 3000 | 2350 | 22.90 |
| 2234 | 12.50X0.68 | 3400 | 2200 | 20.90 |
| 2734 | 12.50X0.68 | 3400 | 6900 | 71.00 |
| 2252 | 12.50X1.12 | 5200 | 1300 | 22.70 |
| 2236 | 15.50X0.58 | 3600 | 2000 | 22.70 |
| 2736 | 15.50X0.58 | 3600 | 6500 | 73.50 |
| 2242 | 15.50X0.68 | 4200 | 1750 | 22.20 |
| 2742 | 15.50X0.68 | 4200 | 5500 | 73.20 |
| 2248 | 15.50X0.80 | 4800 | 1500 | 21.70 |
| 2254 | 15.50X0.89 | 5400 | 1300 | 22.70 |
| 2754 | 15.50X0.89 | 5400 | 4200 | 72.20 |
| 2270 | 15.50X1.12 | 7000 | 1100 | 22.90 |
| 2262 | 18.50X0.82 | 6200 | 1150 | 22.50 |
| 2762 | 18.50X0.82 | 6200 | 3680 | 70.10 |
| 2275 | 18.50X1.00 | 7500 | 950 | 22.90 |
| 2775 | 18.50X1.00 | 7500 | 3050 | 72.20 |
| 2285 | 18.50X1.12 | 8500 | 800 | 21.80 |
| 2785 | 18.50X1.12 | 8500 | 2600 | 68.50 |

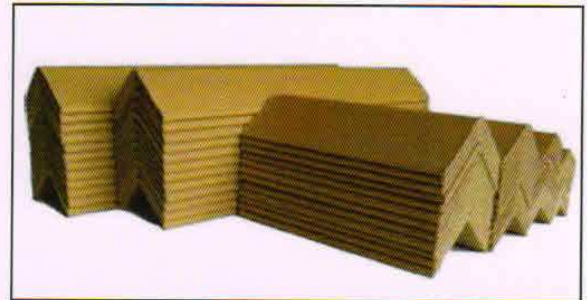


| TECHNICAL DATE | Premium 550 | Classic 450 |
|---------------------------------|----------------|-------------|
| Tensile Strength (N/Sq. mm) | | |
| Temperature Range | | |
| During Storage | -40 up +80 C | |
| During Application(Recommended) | +3 up to +40 C | |
| Ultra Violet Stability | Existent | |
| Weight / Coil | | |
| Standars Coil | Approx. 23 kgs | |
| Jumbo Coil | Approx. 70 Kgs | |

| Size | WidthxThick in mm | Breaking Strength (N) | Mts/Coil | Kgs/Coil |
|------|-------------------|-----------------------|----------|----------|
| 1238 | 12.50x0.58 | 3500 | 2500 | 21.80 |
| 1738 | 12.50x0.58 | 3500 | 8000 | 70.50 |
| 1246 | 12.50x0.68 | 4200 | 2000 | 20.90 |
| 1746 | 12.50x0.68 | 4200 | 6600 | 69.00 |
| 1248 | 15.50x0.58 | 4400 | 2000 | 21.70 |
| 1748 | 15.50x0.58 | 4400 | 6500 | 70.50 |
| 1258 | 15.50x0.68 | 5200 | 1750 | 22.50 |
| 1268 | 15.50x0.89 | 6800 | 1300 | 21.70 |
| 1768 | 15.50x0.89 | 6800 | 4200 | 70.20 |
| 1287 | 15.50x1.12 | 8600 | 1100 | 23.20 |
| 1787 | 15.50x1.12 | 8600 | 3250 | 70.00 |

ANGLE BOARD / CORNER PROTECTIONS

| S.No. | Leg Size (mm) | Thickness (mm) | Compression Load in Kg (Min) |
|-------|---------------|----------------|------------------------------|
| 1 | 75 x 75 | 5.70 | 350 |
| 2 | | 5.00 | 300 |
| 3 | | 4.00 | 240 |
| 4 | 65 x 65 | 5.00 | 240 |
| 5 | | 4.00 | 190 |
| 6 | 50 x 50 | 5.00 | 230 |
| 7 | | 4.00 | 175 |
| 8 | | 3.00 | 125 |
| 9 | 40 x 40 | 5.00 | 130 |
| 10 | | 4.00 | 100 |
| 11 | | 3.00 | 90 |
| 12 | 35 x 35 | 4.00 | 110 |
| 13 | 30 x 30 | 3.00 | 70 |



Tolerance

Leg Length : +/- 1.00 mm
Length : +/- 3.00 mm
Thickness : +/- 0.10 mm
Angle : +/- 5.0 degree
Compression Load : +/- 5.0%



MZ Construction Consumable Supply LTD
Contact Number: +447424438725
Contact Email: MZ@mzccs.co.uk ,MZccs@yahoo.com



For Export Enquiry

Peter Cruz
Email :mz@mzccs.co.uk

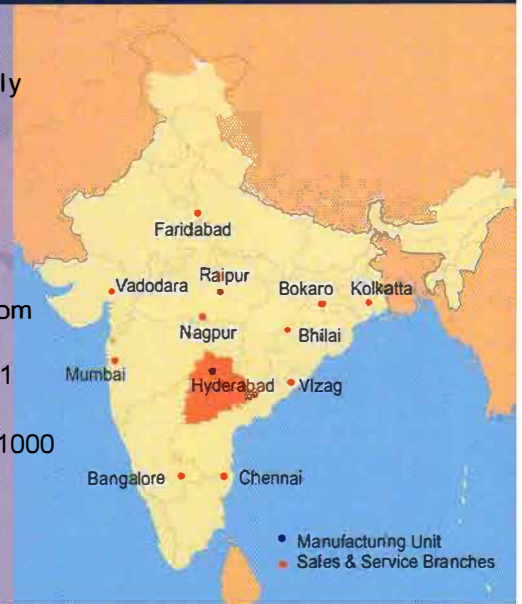
For Domestic Enquiry

Tel No:+447424438725

Email : mz@mzccs.co.uk

- Manufacturing Unit
- Sales & Service Branches
- Mumbai
- Vadodara
- Raipur
- Nagpur
- Hyderabad
- Vizag
- Bangalore
- Chennai
- Faridabad
- Bokaro
- Kolkatta
- Bhillai

MZ Construction Consumable Supply LTD
 23A Botwell Lane, Hayes,
 Middlesex, United Kingdom,
 UB3 2AB
 Contact Number : +447424438725
 Contact Email :
 MZ@mzccs.co.uk, MZccs@yahoo.com
 Web site : www.mzccs.co.uk
 Company Registration No : 10347411
 VAT Registration No : 250 7305 31
 EORI Registration No :GB250730531000



Factory Address

Grip Strapping Technologies Private Limited

Survey # 380, 382 & 384, Nuthankal, Medchal -501401 India

email : Mz@mzccs.co.uk

MZ

Grip Strapping Technologies Private Limited

MZ